

MAKE THE NEW WINSHIP INTRANET YOUR HOMEPAGE

Winship Intranet Login Guide for SharePoint On Internet Explorer

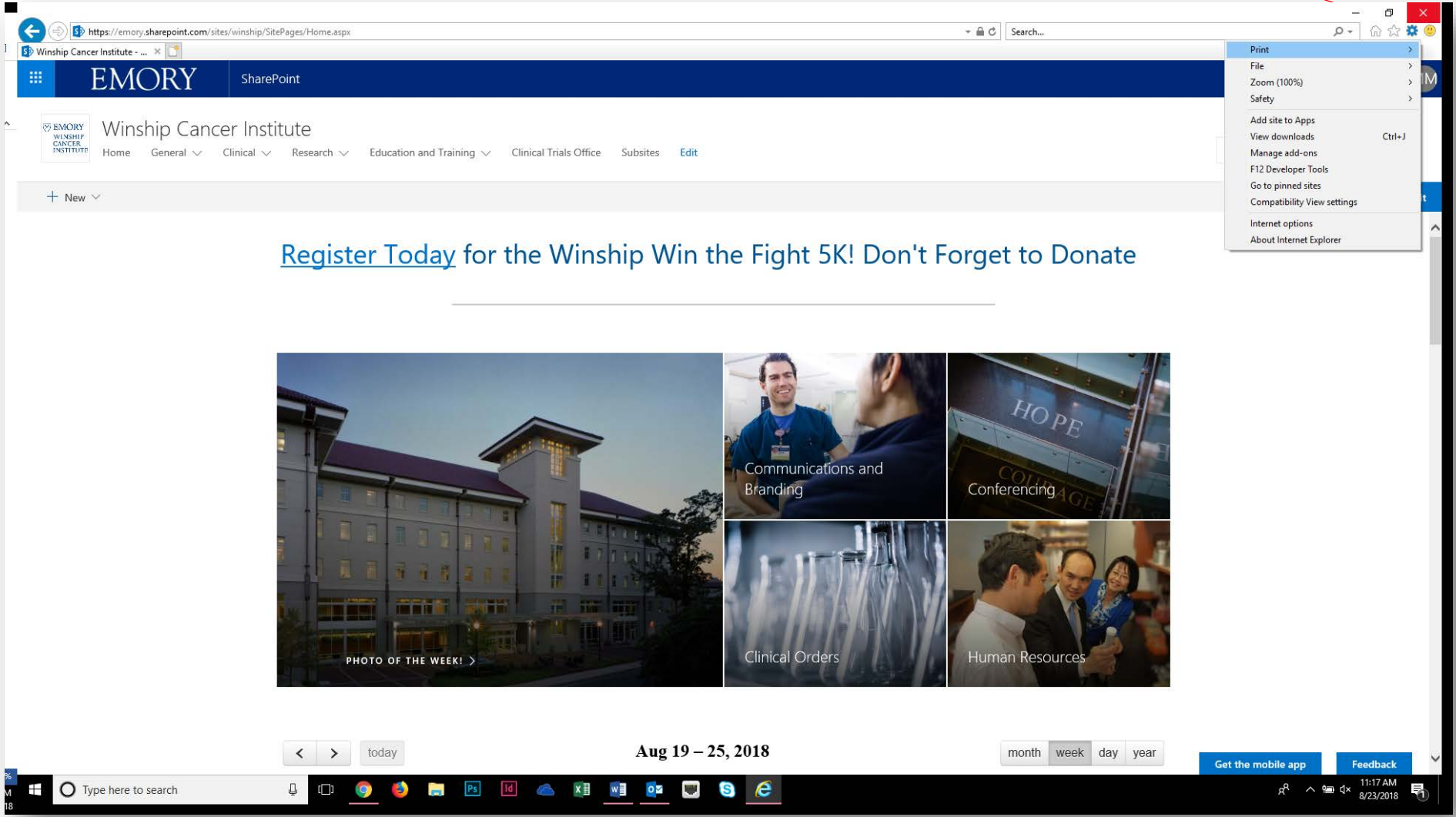
Enter the Winship Intranet link (as seen below) in the address bar and complete the login process as directed in the Login Guide.

Link: <http://emory.sharepoint.com/sites/winship/SitePages/Home.aspx>

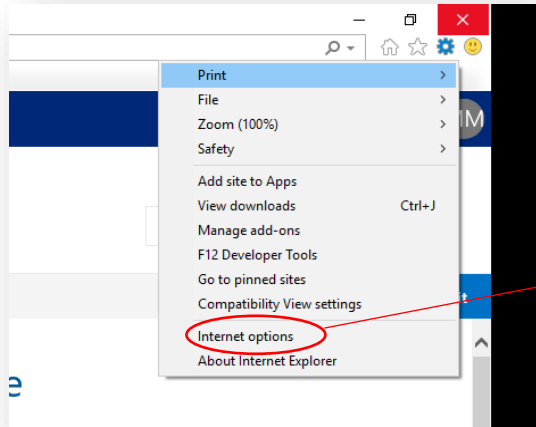
The screenshot displays the Winship Cancer Institute SharePoint intranet homepage. The browser's address bar contains the URL <http://emory.sharepoint.com/sites/winship/SitePages/Home.aspx>, which is circled in red. The page header includes the Emory logo and the text "SharePoint". The main navigation menu lists "Home", "General", "Clinical", "Research", "Education and Training", "Clinical Trials Office", "Subsites", and "Edit". A search bar is located in the top right corner. The main content area features a large banner with the text "Register Today for the Winship Win the Fight 5K! Don't Forget to Donate". Below the banner is a grid of images and text boxes: "PHOTO OF THE WEEK!" with an arrow, "Communications and Branding", "HOPE CONFERRING", "Clinical Orders", and "Human Resources". At the bottom, there are navigation controls for "today", "Aug 19 – 25, 2018", and "month week day year", along with buttons for "Get the mobile app" and "Feedback".

Winship Intranet Login Guide for SharePoint

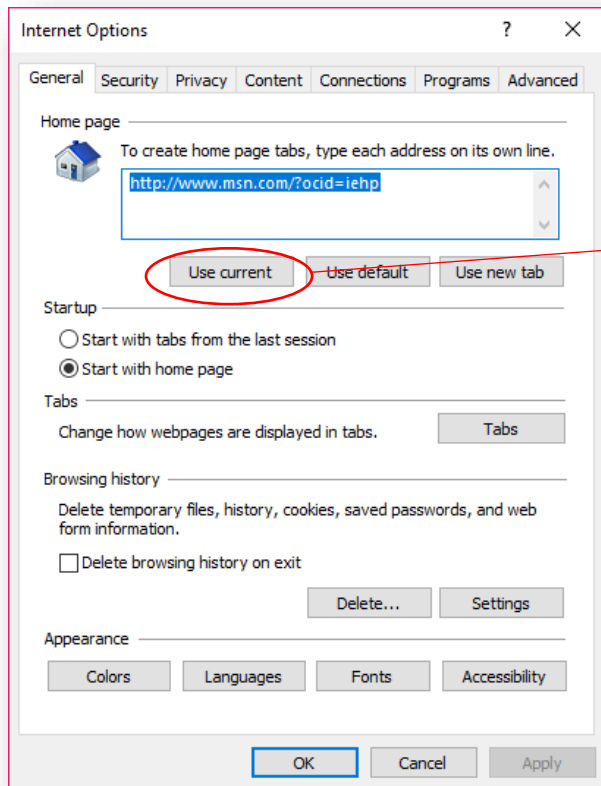
Select the "Tools" button on the Internet Explorer toolbar



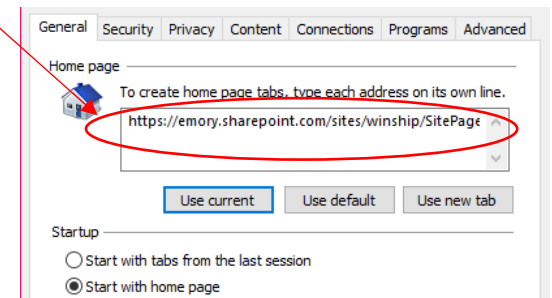
Winship Intranet Login Guide for SharePoint



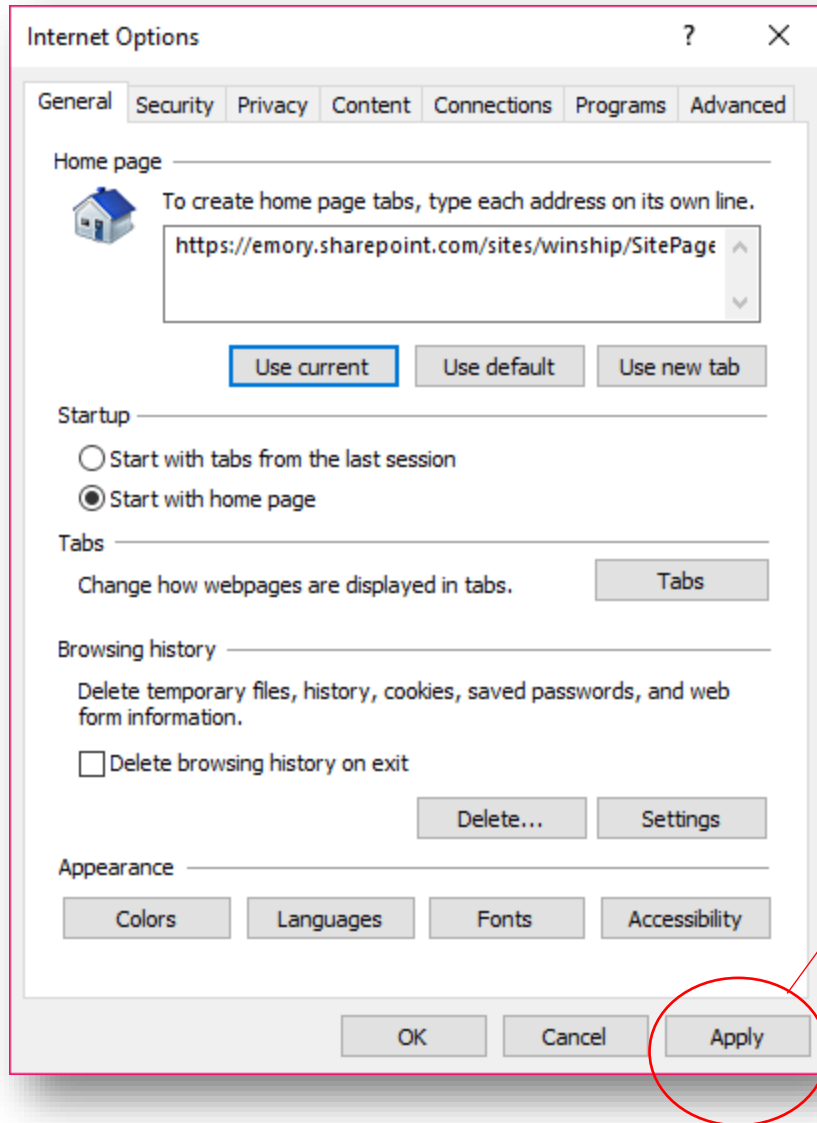
Select "Internet Options" from Tools



Select "Use Current" button.
The text highlighted blue in the box should change to Winship Intranet Link as seen on the right.



Winship Intranet Login Guide for SharePoint



After checking to make sure that the Winship Intranet link is displayed, click "Apply" and then close the browser.

To check if the changes were made, re-open your browser and note if the Winship Intranet link opens.